

# THE OUTDOOR LOOK DECKING INSTALLATION GUIDE



## 1. STORAGE AND HANDLING

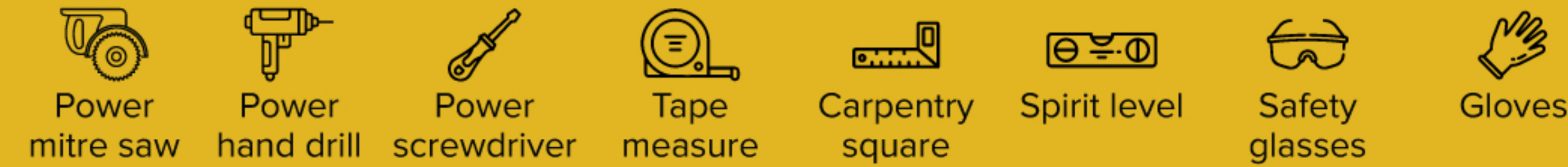
- Keep covered until ready to be installed to maintain a clean surface.
- Store flat on a level surface and ensure it is supported Evenly 50mm (including board ends).
- Boards should be lifted and placed carefully, avoiding any sliding of boards against each other when moving them.
- Boards should be carried on the edge for better support.
- The surface of the boards should be kept free of construction material and debris to prevent damage to the boards.



## 6. MAINTENANCE AND CARE

- The Outdoor Look decking can be washed with either soapy water and a soft brush or with a power washer.
- Please note that some initial lightening may occur as the product naturally weathers over the first 8-10 weeks.

## 2. REQUIRED TOOLS



## 3. CALCULATING QUANTITY OF BOARDS REQUIRED

- Plan the design of the proposed decked area and decide which way your boards will be running, you may also want to consider putting a border to add to the final look. If you are installing your decking in a herringbone style, please allow for 20% extra wastage.
- Start by measuring the proposed area to work out the square meterage. This is done by multiplying the width x length. Alternatively you can input your width and length or square meterage into our online calculator on the website.
- Once you have the total square meterage of your area, divide this by the square meterage of the board you want to use and this will give you the amount of boards needed.

### Always round up.

- i.e: 9m x 5m = 45m<sup>2</sup> area with 2 open sides using our decking range.
- Board dimensions – 0.146m (Width) x 3.6m (Length) = 0.525m<sup>2</sup> per board.
- 45m<sup>2</sup> ÷ 0.525m<sup>2</sup> = 85.714 boards. So, you would require 86 boards.

### Hidden Fixing clips.

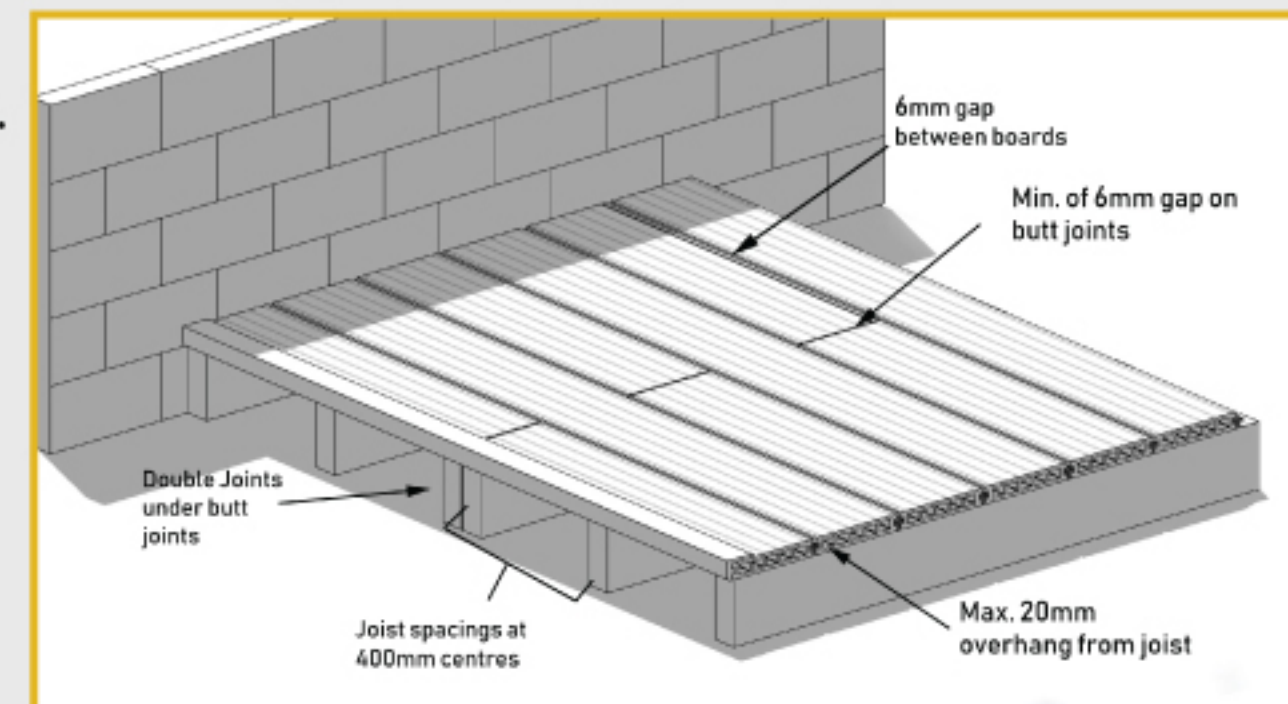
- 1 box includes 180 hidden fixing clips & 180 screws. This will install 10m<sup>2</sup> of Composite decking using 400mm joist centres. Each box of fixing also includes 5 starter/end clips. (Recommended joist span for horizontal installation).
- 45m<sup>2</sup> ÷ 10 (1 box) = 4.5 box. So, you would require 5 boxes.

### Square Edge Board (Bullnose board).

- 1 length of board is 3.6m and this is generally used on all open edges and steps.
- Add the 2 sides with open edges and divide by 3.6.
- 9m + 5m = 14m.
- 14m ÷ 3.6m = 3.8m boards. So, you would require 4 square edge boards.

### Total Order.

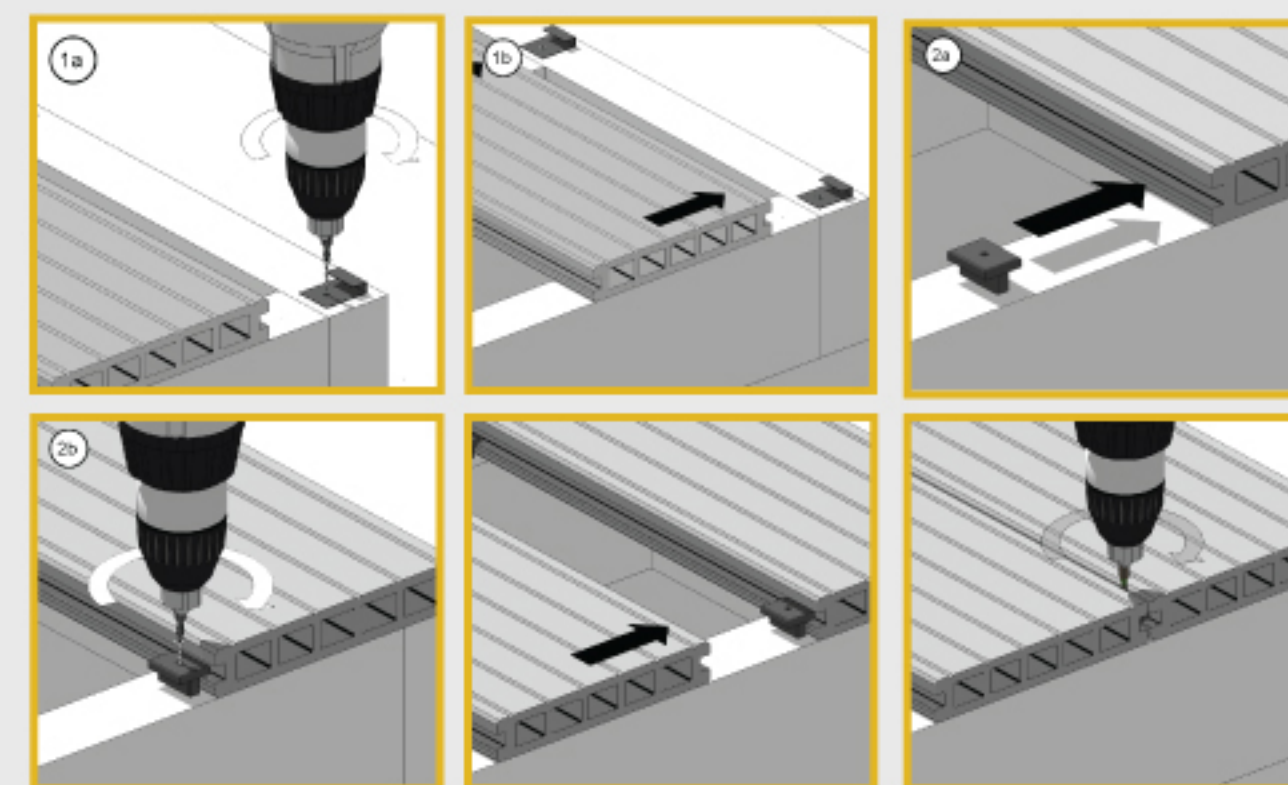
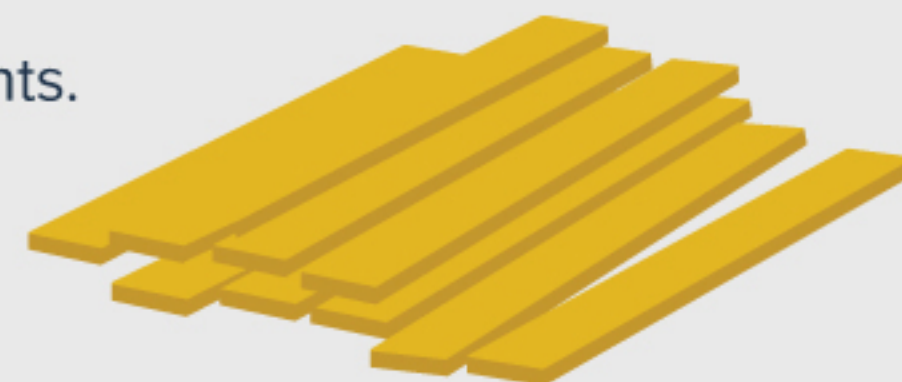
- 3.6m boards - 86.
- Hidden fixing clips - 5 boxes.
- 3.6m Square edge boards - 4 boards.



## 4. DECK SPACING

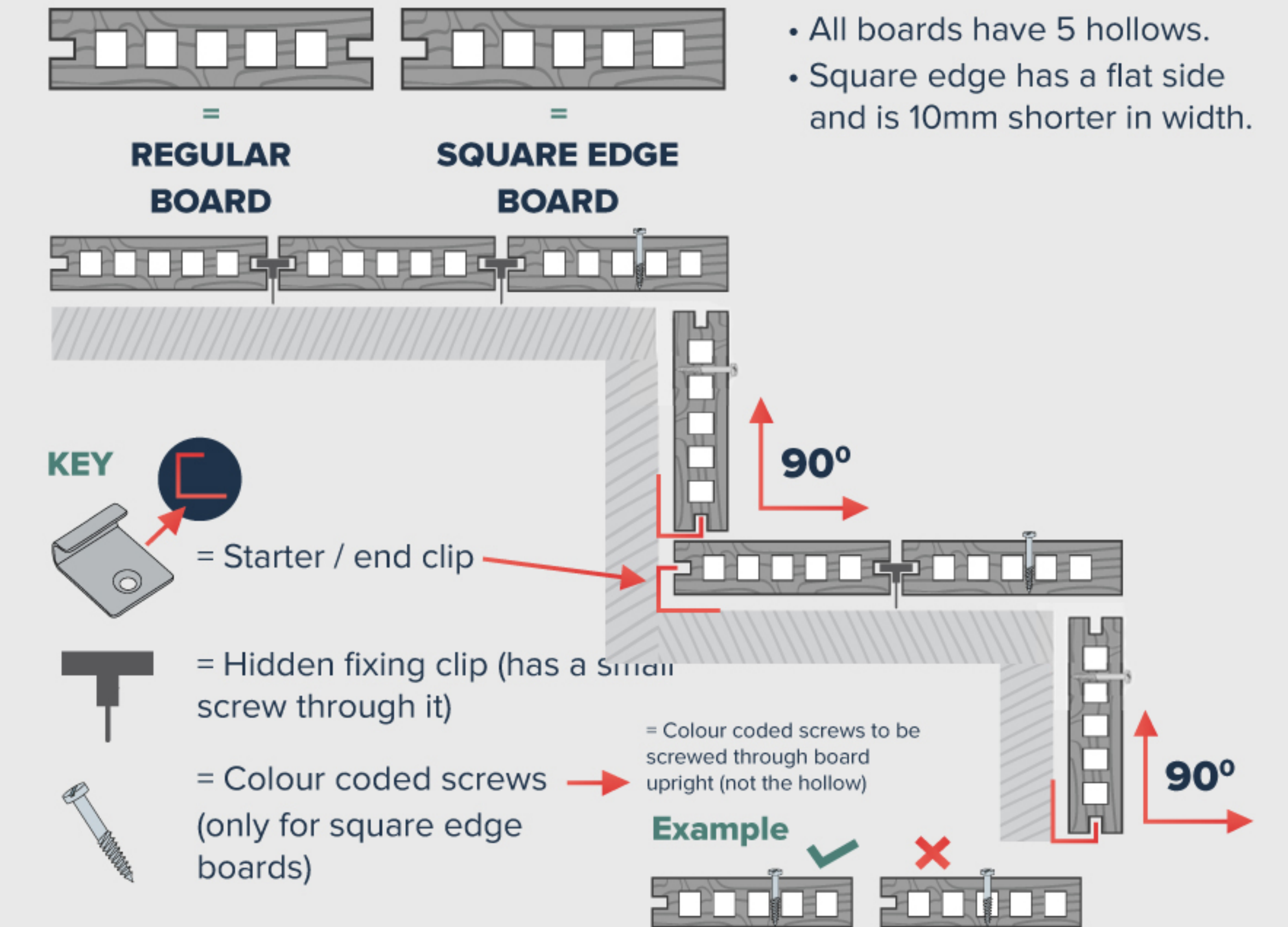
Composites can expand up to 0.036% so, for example, on a 3.6mm board this could equal a 3mm expansion or contraction.

- Min. 10mm gap from fixed objects.
- Min. 5mm gap between boards.
- Min. 6mm gap between end to end board butt joints.
- Max. 20mm board overhang from joist.
- Use double joists under all end to end boards.
- Joist centres max span 400mm.



## 5. HOW TO INSTALL STEPS

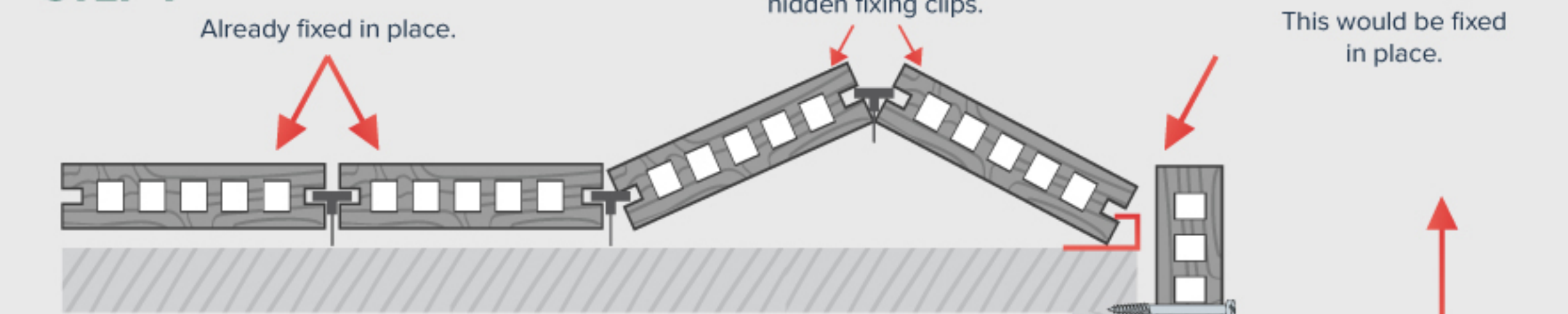
### KEYS



### Installing square edge for platform decking

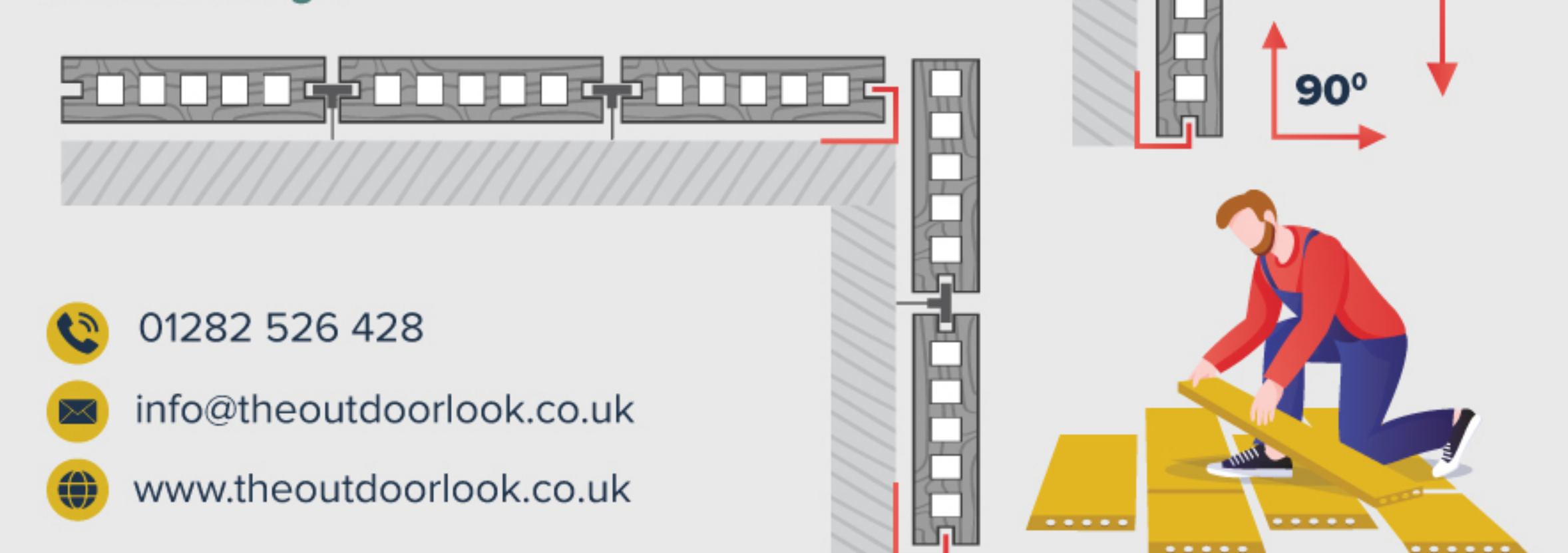
Putting last board in place

#### STEP 1



#### STEP 2 - FINISH LOOK

Showing finished install of square edge board on a deck edge.



01282 526 428

info@theoutdoorlook.co.uk

www.theoutdoorlook.co.uk